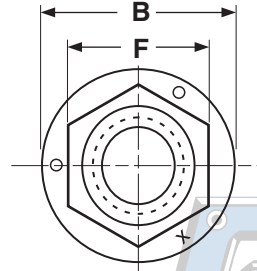
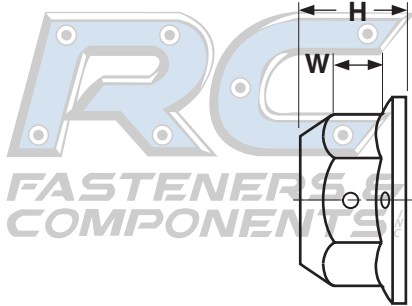


Reversible Center Lock, Grade F **REGULAR FLANGE NUTS**

FASTENERS & COMPONENTS



FASTENERS & COMPONENTS

REGULAR FLANGE CENTER LOCKNUTS, GRADE F							Aztech*
Nominal Size and Thread Pitch	F		B	W	H		
	Width Across Flats		Flange Diameter	Wrench Height	Total Thickness		
	Max	Min	Max	Min	Max	Min	
1/4-20	0.438	0.428	0.594	0.14	0.234	0.223	
5/16-18	0.502	0.489	0.680	0.17	0.281	0.268	
3/8-16	0.562	0.551	0.750	0.23	0.347	0.330	
1/2-13	0.750	0.736	1.031	0.31	0.458	0.437	
5/8-11	0.938	0.922	1.281	0.40	0.569	0.545	

Description	A hex nut with two or three, round or rectangular indentations, compressed onto the flat sides of the nut equidistant from each other and an enlarged circular base flaring out from the bottom of the nut. The compressions create slightly distorted center threads resulting in a controlled locking action when the threads of the mating part become engaged.
Applications/Advantages	This is usually a more inexpensive prevailing torque type of nut, designed for use with steel bolts and screws of a tensile strength not greater than 120,000 psi. It creates a locking action even without being fully threaded onto its mating screw.
Material	SAE 1010 or equivalent steel
Hardness	Rockwell C28 maximum
Proof Load	120,000 psi.
Plating	See Appendix-A for plating information.

*Aztech is the author of these flange center lock nut specifications.

FASTENERS & COMPONENTS