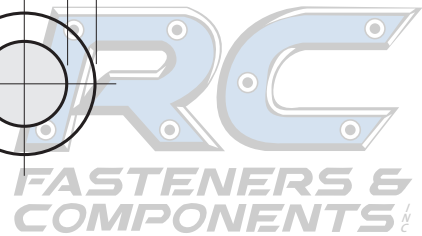
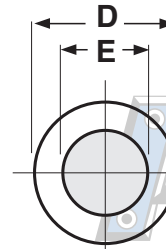
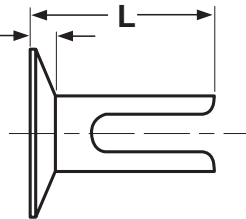
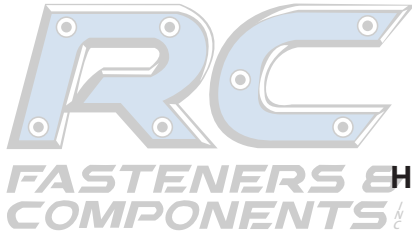


SPLIT, FLAT COUNTERSUNK HEAD



SPLIT RIVETS, FLAT COUNTERSUNK HEAD							ASME B18.7 (2012)
Nominal Size	E Shank Diameter		D Head Diameter		H Head Thickness		Tolerance on Length
	Max	Min	Max	Min	Max	Min	
	0.125	0.125	0.113	0.223	0.213	0.036	
0.152	0.152	0.144	0.317	0.307	0.053	0.043	±0.015
0.152	0.152	0.144	0.380*	0.370*	0.062*	0.052*	±0.015
0.190	0.190	0.180	0.443	0.431	0.061	0.051	±0.015

*Rivets in 0.152 in., size having these head proportions shall be designated "Large Flat Countersunk Head."

Description	A small, countersunk headed metal fastener with a split end for clinching by spreading the ends.
Applications/ Advantages	Designed to permanently join soft materials such as rubber, leather, canvas, wood and soft plastics. It eliminates cost of pre-drilling holes while preserving the strength of the assembly by not having material removed from the objects being joined. The rivet is installed with anvils that spread the prongs against the material.
Material	Steel: Low carbon steel (containing 0.1% carbon or less)

