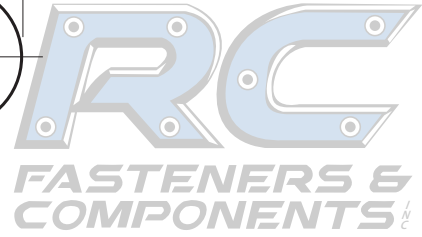
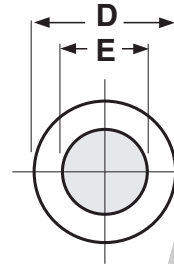
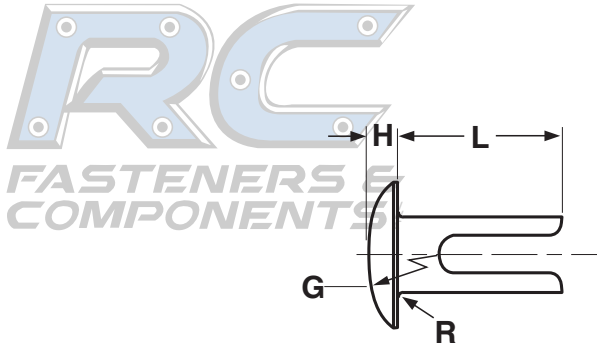


RIVETS

SPLIT, OVAL HEAD



SPLIT RIVETS, OVAL HEAD									ASME B18.7 (2012)
Nominal Size	E Shank Diameter		D Head Diameter		H Head Thickness		G Radius of Head	R Fillet Radius	Tolerance on Length
	Max	Min	Max	Min	Max	Min	Approx	Max	
	0.092	0.092	0.085	0.152	0.142	0.026	0.020	0.22	
0.125	0.125	0.113	0.223	0.213	0.035	0.027	0.31	0.016	±0.015
0.152	0.152	0.144	0.318	0.306	0.045	0.035	0.27	0.020	±0.015
0.190	0.190	0.180	0.349	0.337	0.055	0.045	0.25	0.025	±0.015

Description	A small, round headed metal fastener with a split end for clinching by spreading the ends.
Applications/ Advantages	Designed to permanently join soft materials such as rubber, leather, canvas, wood and soft plastics. It eliminates cost of pre-drilling holes while preserving the strength of the assembly by not having material removed from the objects being joined. The rivet is installed with anvils that spread the prongs against the material.
Material	<i>Steel:</i> Low carbon steel (containing 0.1% carbon or less)